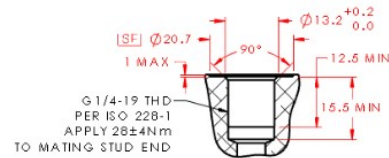
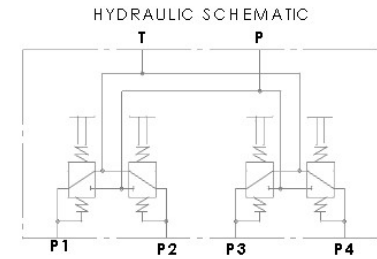
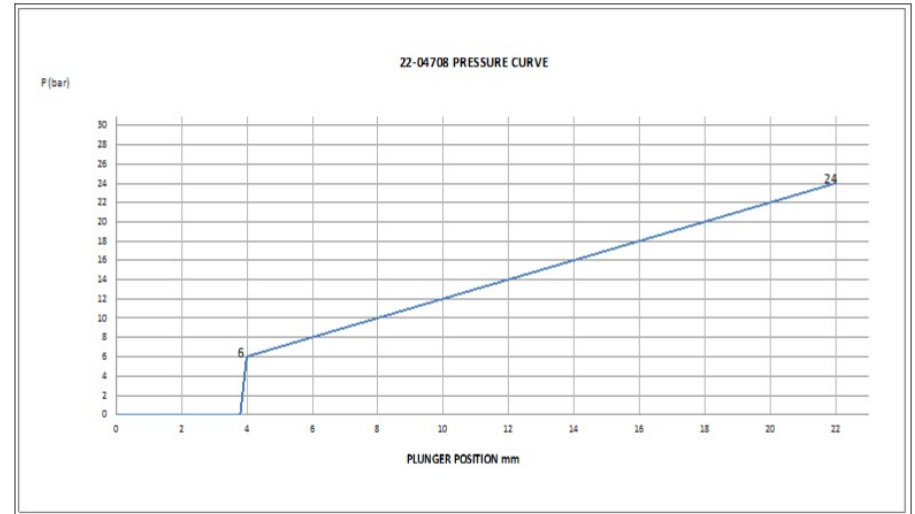
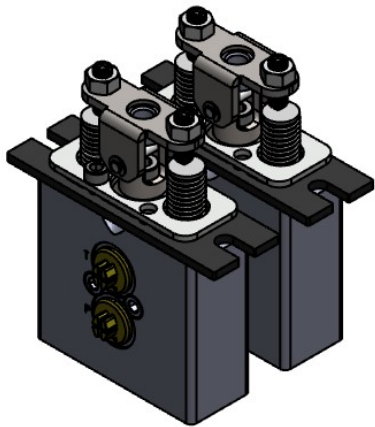
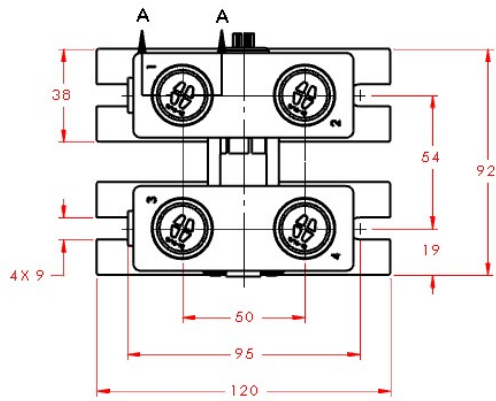
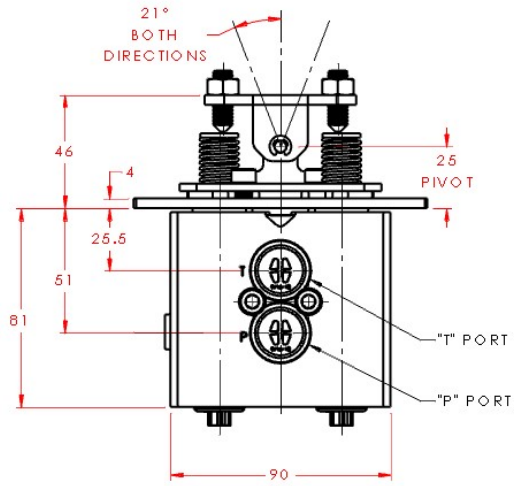
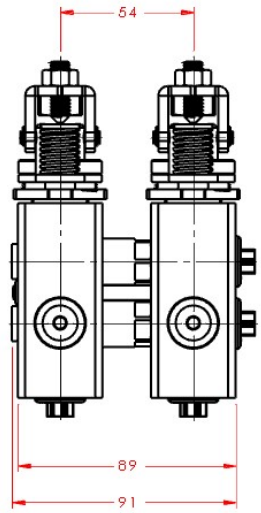


8 7 6 5 4 3 2 1

REVISIONS

REV.	REV. DESCRIPTION	REV. DATE	REV. BY
A			



HYDRAULIC SPECIFICATION:

1. MAXIMUM INPUT PRESSURE: 60 Bar
2. RATED PRESSURE: 34 Bar
3. MAXIMUM RETURN PRESSURE: 3 Bar
4. OUTPUT PRESSURE: SEE PRESSURE CURVE GRAPH
5. MAXIMUM NATURAL LEAKAGE: 48mL/MIN
6. MAXIMUM WORKING LEAKAGE: 35mL/MIN/CARTRIDGE
7. OIL: MINERAL OIL (10W RECOMMENDED)
8. WORKING FLOW: 20 L/min
9. TEMPERATURE: -20° ~ 90°C

SOLIDWORKS / ENTERPRISE PDM CONTROLLED DOCUMENT. ALL COPIES ARE REFERENCE

METRIC	NAME	DATE
DRAWN		02/10/2020
CHECKED		
APPROVED		

QP Hydraulics

DIVISION OF PRINCE INDUSTRIES, INC.

PILOT VALVE-SLH+1-446
(INSTALLATION)

DESCRIPTION CODE:

SLH+1-4NSGNS-N00-S3A

22-04708

REV
A



WEIGHT: 2118.4 g

SCALE: 1:5

SOLIDWORKS SHEET 1 OF 1



8 7 6 5 4 3 2 1

B METRIC

A