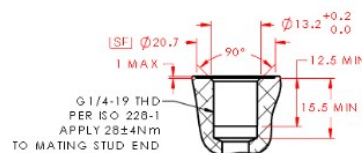
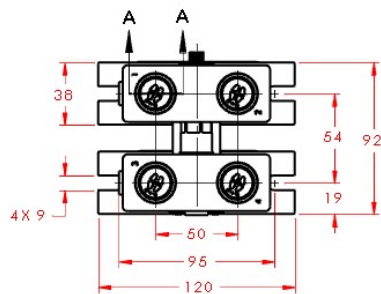
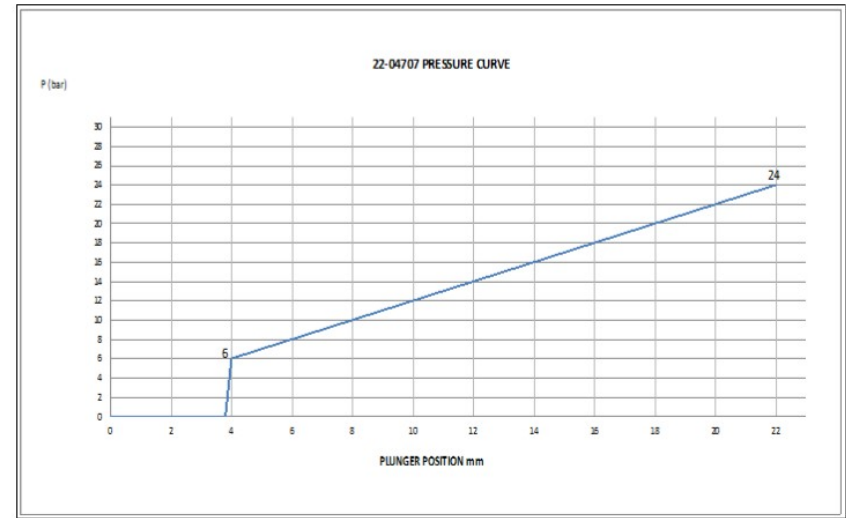
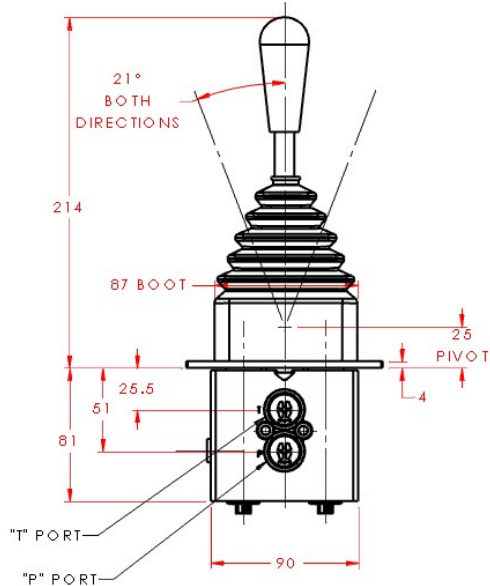
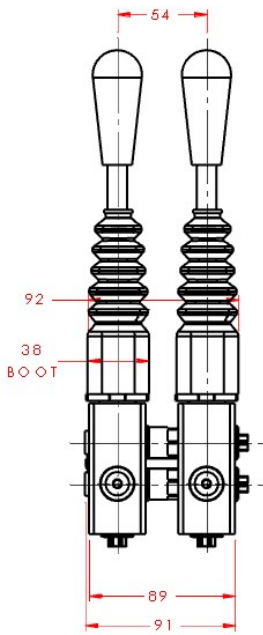
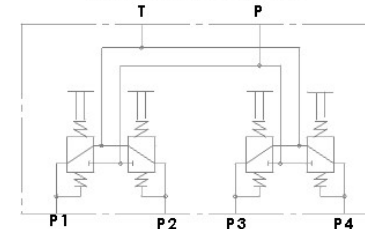


REVISIONS

REV.	REV. DESCRIPTION	REV. DATE	REV. BY
B			



HYDRAULIC SCHEMATIC



HYDRAULIC SPECIFICATION:

1. MAXIMUM INPUT PRESSURE: 60 Bar
2. RATED PRESSURE: 34 Bar
3. MAXIMUM RETURN PRESSURE: 3 Bar
4. OUTPUT PRESSURE: SEE PRESSURE CURVE GRAPH
5. MAXIMUM NATURAL LEAKAGE: 48mL/MIN
6. MAXIMUM WORKING LEAKAGE: 35mL/MIN/CARTRIDGE
7. OIL: MINERAL OIL (10W RECOMMENDED)
8. WORKING FLOW: 20 L/min
9. TEMPERATURE: -20° ~ 90°C

PRINCE INDUSTRIES INC. PROPRIETARY

SOLIDWORKS / ENTERPRISE PDM CONTROLLED DOCUMENT. ALL COPIES ARE REFERENCE

METRIC	NAME	DATE
DRAWN		02/14/2022
CHECKED		
APPROVED		

QP Hydraulics

DIVISION OF PRINCE INDUSTRIES, INC.

PILOT VALVE - SLH+1-446 (INSTALLATION)

DESCRIPTION CODE:

SLH+1-4NSGSS-D00-S3A

22-04707

REV B

THIRD ANGLE PROJECTION

QTY

BEAM

WEIGHT: g

SCALE: 1:5

SOLIDWORKS

SHEET 1 OF 1