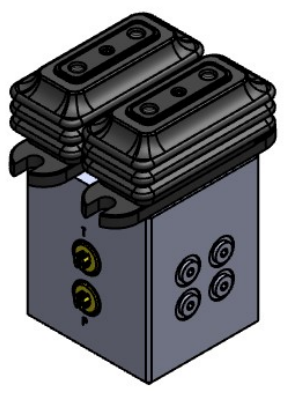
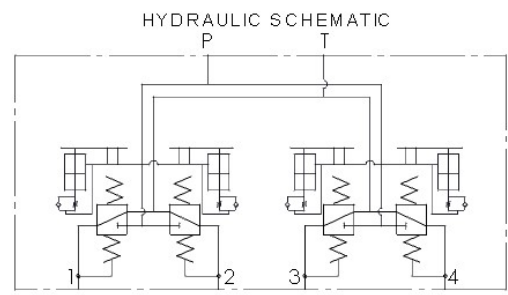
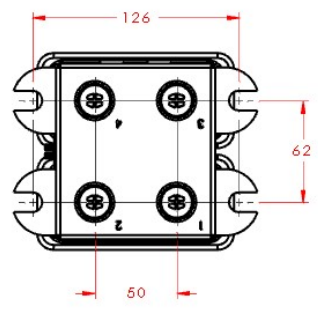
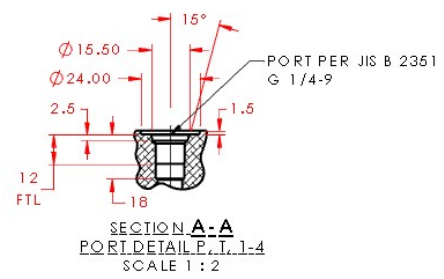
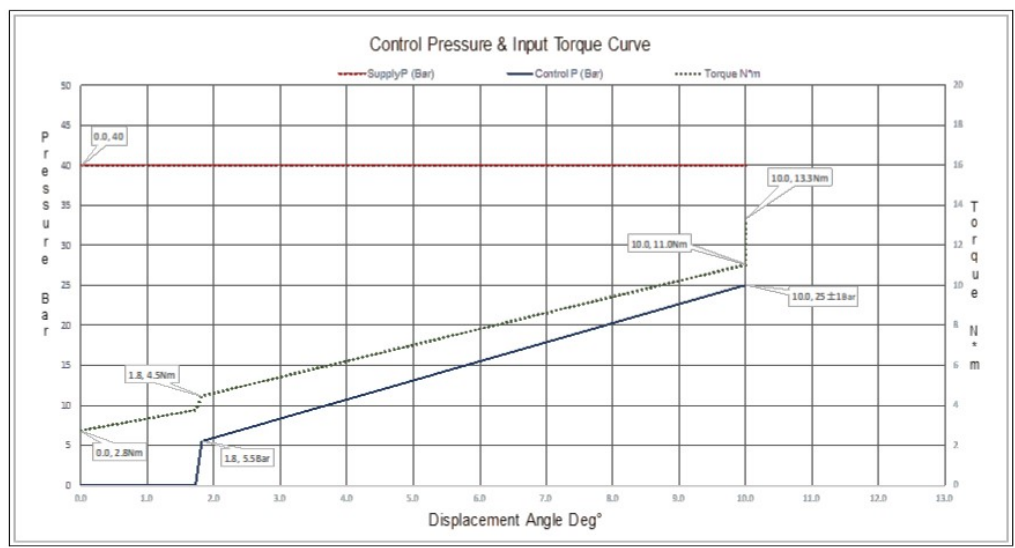
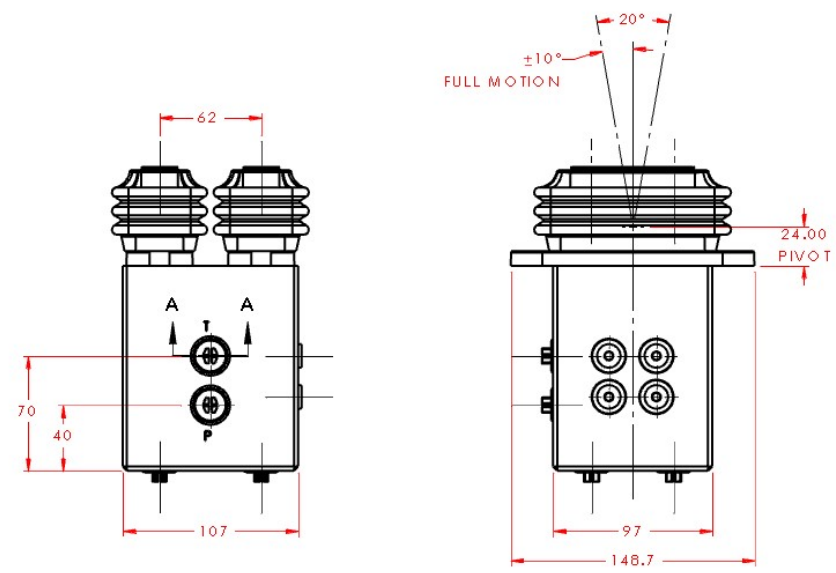


| REVISIONS |                  |           |         |
|-----------|------------------|-----------|---------|
| REV.      | REV. DESCRIPTION | REV. DATE | REV. BY |
| C         |                  |           |         |



- SPECIFICATION:
- 1) MAXIMUM INPUT PRESSURE: 100 kgf/cm<sup>2</sup>
  - 2) WORKING INPUT PRESSURE: 40 kgf/cm<sup>2</sup>
  - 3) MAXIMUM ADAPTER INSTALL TORQUE: 390kgf·cm
  - 4) OIL: MINERAL OIL (10W RECOMMEND)
  - 5) FLOW: 20 L/min
  - 6) TEMPERATURE: -20°C~90°C

PRINCE INDUSTRIES INC.  
**PROPRIETARY**  
THIS IS A TRADE SECRET AND NOT BE DISCLOSED OR REPRODUCED IN ANY MANNER WITHOUT THE WRITTEN PERMISSION OF PRINCE INDUSTRIES INC.

SOLIDWORKS / ENTERPRISE PDM CONTROLLED DOCUMENT. ALL COPIES ARE REFERENCE

|          |             |            |
|----------|-------------|------------|
| APPROVED | METRIC NAME | DATE       |
| CHECKED  |             | 02/16/2022 |
| DRAWN    |             |            |

**QP Hydraulics**  
 DIVISION OF PRINCE INDUSTRIES, INC.  
 DESCRIPTION  
**PILOT VALVE FP48 DAMPENING**

MATERIALS:  
 SEE BOM

DESCRIPTION CODE:  
 FP8-24NS-NG-S

INFORMATION PROJECTION  
 BEAM  
 QTY

PART NO  
**22-04714**  
 REV  
**C**  
 WEIGHT: 5764.3 g SCALE: 1:3  
 SOLIDWORKS SHEET 1 OF 1