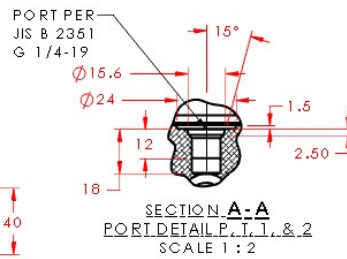
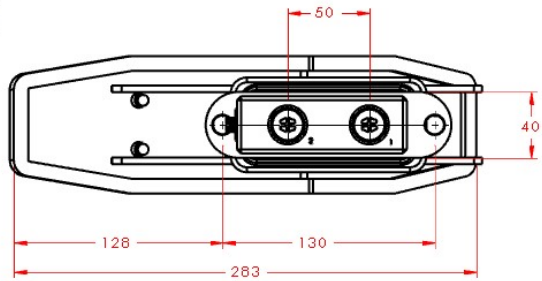
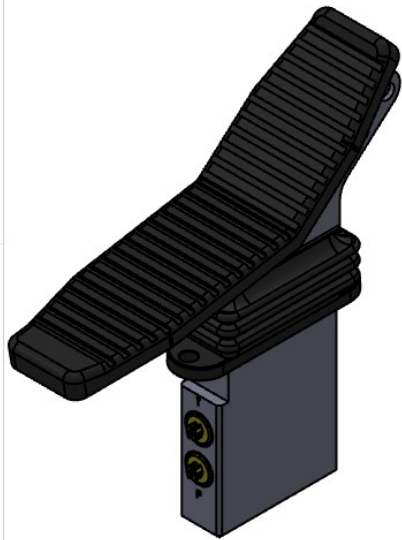
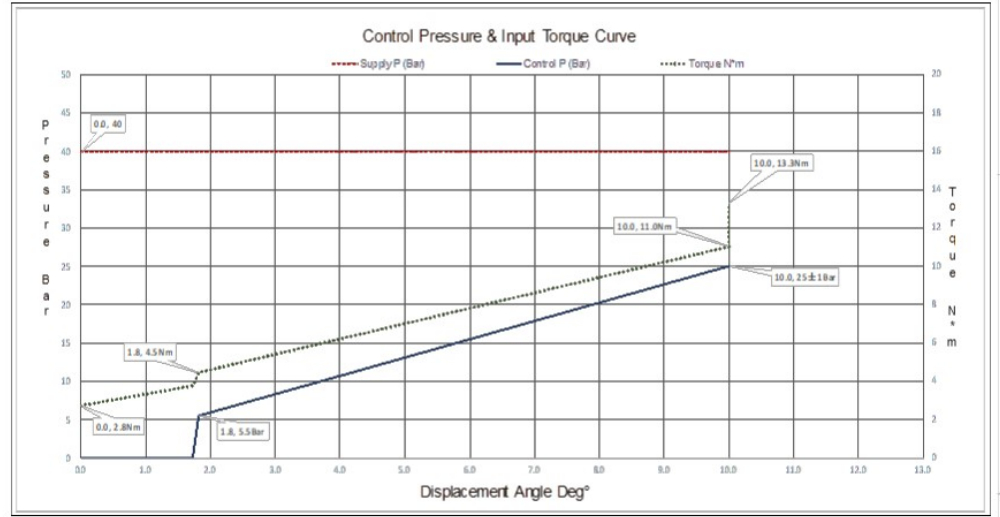
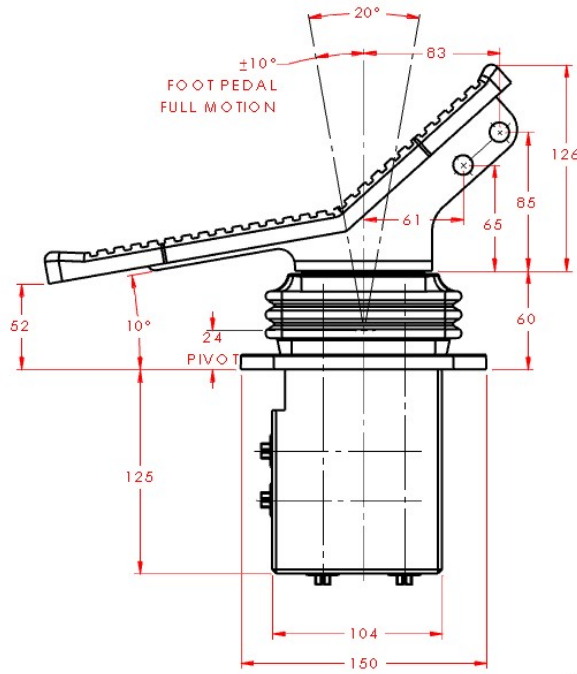
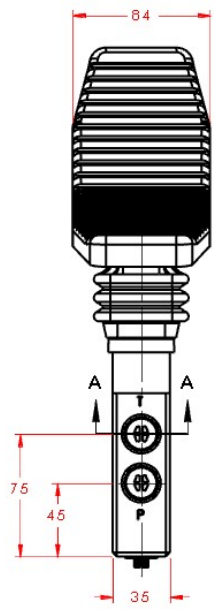


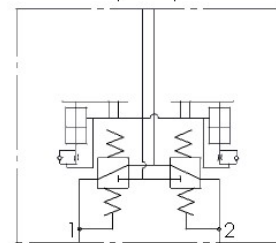
8 7 6 5 4 3 2 1

REVISIONS

REV.	REV. DESCRIPTION	REV. DATE	REV. BY
A			



HYDRAULIC SCHEMATIC



HYDRAULIC SPECIFICATION:

1. MAXIMUM INPUT PRESSURE: 100 kgf/cm²
2. WORKING INPUT PRESSURE: 40 kgf/cm²
3. MAXIMUM ADAPTER INSTALL TORQUE: 390 kgf-cm
4. OIL: MINERAL OIL (10W RECOMMENDED)
5. FLOW: 20 L/min
6. TEMPERATURE: -20° ~ 90°C

SOLIDWORKS / ENTERPRISE PDM CONTROLLED DOCUMENT. ALL COPIES ARE REFERENCE

METRIC	NAME	DATE
DRAWN		02/13/2023
CHECKED		
APPROVED		

QP Hydraulics

DIVISION OF PRINCE INDUSTRIES, INC.
DESCRIPTION
FOOT PEDAL 28-5.5-25 BAR DAMPING (INSTALLATION)

DESCRIPTION CODE:
FP8-12NS-SG-S

PART NO	REV
22-04713	A
WEIGHT: 5.868 g	SCALE: 1:3
SOLIDWORKS	SHEET 1 OF 1

PRINCE INDUSTRIES INC.
PROPRIETARY

8 7 6 5 4 3 2 1

B METRIC