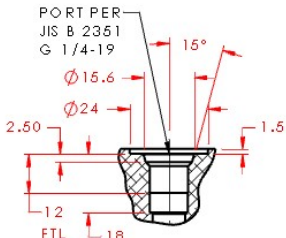
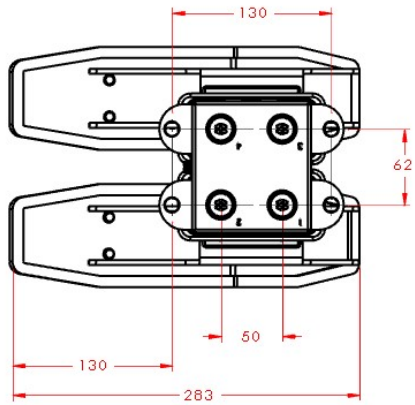
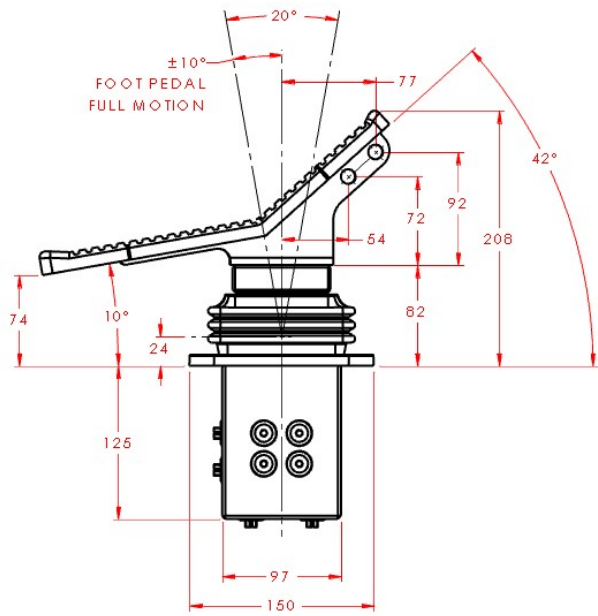
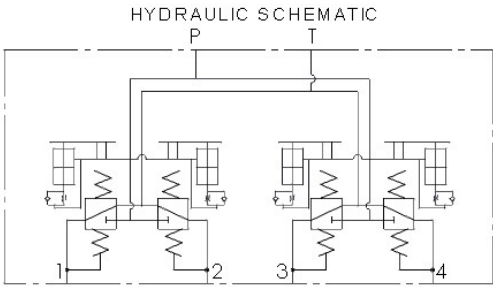
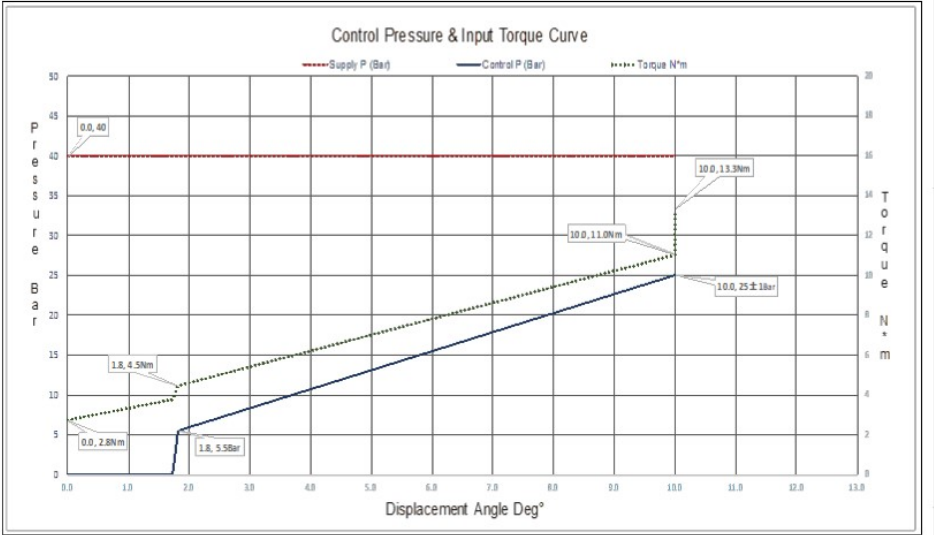


REVISIONS			
REV.	REV. DESCRIPTION	REV. DATE	REV. BY
B			



- SPECIFICATION:**
- 1) MAXIMUM INPUT PRESSURE: 100 kgf/cm²
 - 2) WORKING INPUT PRESSURE : 40 kgf/cm²
 - 3) MAXIMUM ADAPTER INSTALL TORQUE: 390kgf·cm
 - 4) OIL: MINERAL OIL (10W RECOMMEND)
 - 5) FLOW : 20 L/min
 - 6) TEMPERATURE: -20°C~90°C

SOLIDWORKS / ENTERPRISE PDM CONTROLLED DOCUMENT. ALL COPIES ARE REFERENCE

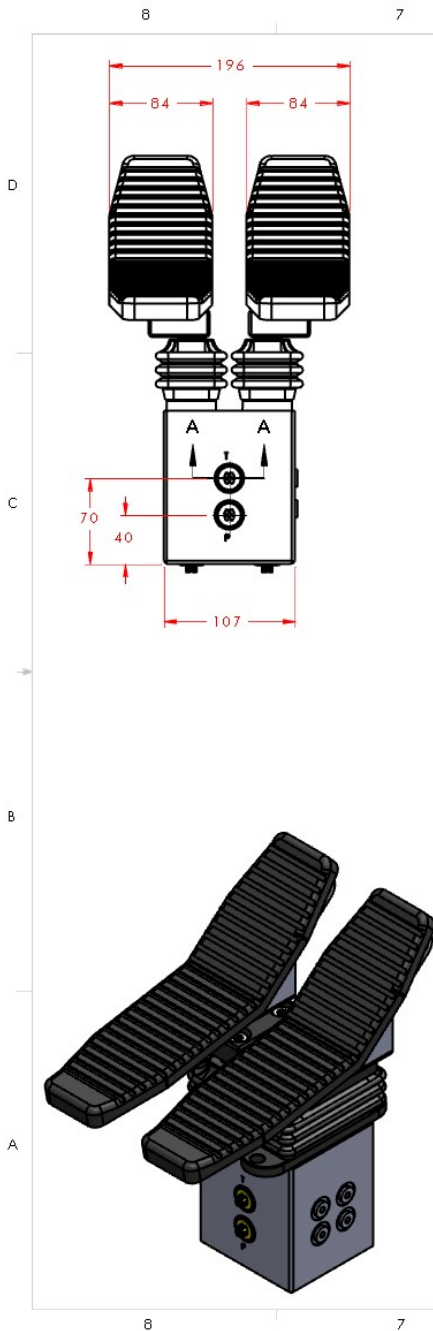
METRIC	NAME	DATE
DRAWN		02/09/2022
CHECKED		
APPROVED		

QP Hydraulics
DIVISION OF PRINCE INDUSTRIES, INC.
FOOT PEDAL 48 DAMPENING (INSTALLATION)

SEE BOM

DISCRIPTION CODE:	FP8-24NS-SG-S
PART NO	22-04712
REV	B
WEIGHT: 6678 g	SCALE: 1:5
SOLIDWORKS	SHEET 1 OF 1

PRINCE INDUSTRIES INC. PROPRIETARY



8 7 6 5 4 3 2 1

B METRIC